

VMware® ESXi Service Module

FEATURE SUMMARY

The AVG Managed Workplace® Service Module for VMware ESXi provides monitoring and management for VMware virtualized environments.

This new service module brings multi-site management of VMware virtual environments to a single pane of glass. All the information you need, aggregated into a single dashboard. Easily manage multiple sites, a single site, host or drill down to a single guest environment.

Features include the ability to:

- Discover VMWare ESXi hosts and guests
- View configuration and performance of resources (CPU, memory, disk, network) for host and guest
- View health status of hardware components
- Management commands to start, stop, pause and reboot virtual machines
- Manage VMware tools and upgrade as necessary from a central dashboard
- Manage snapshots proactively
- Receive alerts on exceeding performance thresholds for (CPU, memory, disk, network, snapshot growth)
- Host and guest reports



Quickly view snapshot growth



Benefits

This new service module includes three policy modules that can be used to monitor VMware hosts and guests.

Easily see configuration, performance and health at the multi-site, site, host or guest level providing a complete end-to-end view of your environments.

At the site level, aggregate data across multiple hosts and guests. Proactively manage resources such as CPU, memory and disk space.

A series of charts show the top 10 hosts relative to resource usage (highest CPU, memory usage, swap space used on disk etc).

At-a-glance view of snapshot growth in graphical format combined with alerting keeps you in control and helps you be aware of issues before they become critical.

Help keep your customers environments operating efficiently as you view key performance data in real-time, see trends over 1hr, 4hr, 24hr or 7day intervals and use reports for summary status.

At the host level, see the host name, IP address, CPU, memory capacity and detailed resource configuration. Act on this information to reboot, shutdown, enter or exit maintenance mode and view the status of commands issued on the host. Monitor hardware including the ability to alert on any hardware subsystem (power, fan, processors, temperature, storage, memory, system and software components) where a failure is detected.

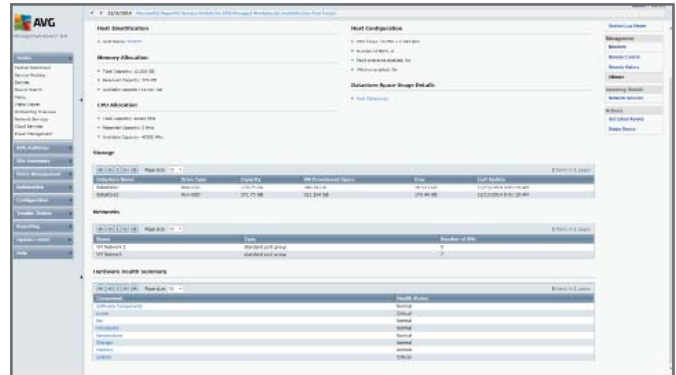
Easily update VMware tools on any virtual environment to make management easier and faster when the time comes.

At the guest level, see the associated host, host uptime, OS version and version of VMware tools. Manage the guest to suspend, power off or on, reset or restart guest devices.

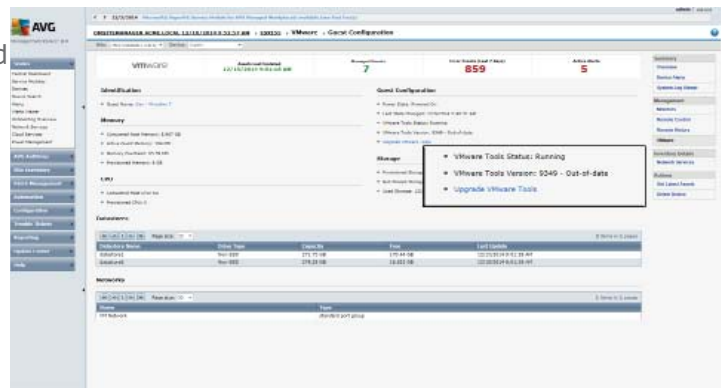
Drill down to manage snapshots and view the status of commands issued on the guest machine.

This service module includes four reports that provide summary data.

Choose from the Multi-Site VMware Summary, Site VMware Summary, Host VMware Summary or Host VMware Guests Summary reports to demonstrate how a virtual environment is being monitored and managed.



At a glance view of the Host Hardware Health



Upgrade VMWare Tools from within the Service Center



FAQs

What version of AVG Managed Workplace is required to use the service module for VMware ESXi?	AVG Managed Workplace 9.01 or greater is required.
Which VMware hosts are supported with this service module?	This service Module supports: <ul style="list-style-type: none">• VMware ESXi 5.1 vSphere Standard, vSphere Standard Plus, vSphere Enterprise, and vSphere Enterprise Plus• VMware ESXi 5.5 vSphere Standard, vSphere Standard Plus, vSphere Enterprise, and vSphere Enterprise Plus
Does this Service Module support the free or trial versions of VMware ESXi?	No. Only the versions listed above.
Is the communication to the host handled securely?	Yes. There is a direct SSH (Secure Shell) connection to the host from the service module.
Does this service module monitor hardware health for hosts?	Yes. The service module monitors hardware components and also sends alert notifications in case a component fails (For example – power supply failure or a temperature sensor failure).
I imported the Service Module from the Update Center. What do I do next?	After importing the service module from the Update Center, the service module will automatically apply itself to VMware hosts based on the auto-application rules pre-configured. You will have to wait for some time to allow the service module to collect and present the data.
Is there a way I can remote control the host device?	Of course you can. You can use the arrow on the top left of the device name to remotely log into the host device console.

© 2015 AVG. All rights reserved. AVG Managed Workplace®, Onsite Manager, Service Center and the AVG Managed Workplace logo are the exclusive properties and trademarks of AVG Technologies. Microsoft®, Windows® PowerShell® are registered trademarks and Office 365™ are trademarks of Microsoft Corporation in the United States and other countries. VMware® is a registered trademark of VMware, Inc. All other brands, product names, company names, trademarks, service marks, images, and symbols are the properties of their respective owners.



About AVG Technologies (NYSE: AVG)

AVG is the online security company providing leading software and services to secure devices, data and people. AVG has over 187 million active users, as of March 31, 2014, using AVG's products and services including Internet security, performance optimization, and personal privacy and identity protection. By choosing AVG's products, users become part of a trusted global community that engages directly with AVG to provide feedback and offer mutual support to other customers.

Keep in touch with AVG



BLOGS

United States:

AVG Technologies USA, Inc.
2105 Northwest Blvd.
Newton, NC 28658,
U.S.A.

✉ casales@avg.com
☎ 1-855-254-6987

United Kingdom & Ireland:

AVG Technologies UK Ltd
Olympic House,
995 Doddington Road
Lincoln, LN6 3SE
United Kingdom

✉ ashley@avg.com
☎ +44(0)1522 803260

Canada:

AVG Technologies Canada Inc.
309 Legget Drive,
Ottawa, ON, K2K 3A3,
Canada.

✉ casales@avg.com
☎ 1-855-254-6987

Australia & New Zealand:

AVG Technologies AU Pty Ltd
47 A Wangara Rd
Cheltenham Victoria 3192
Australia

✉ resellerau@avg.com
☎ Australia: 1800 230 463
☎ New Zealand: 0800 452 980

Rest of World:

AVG Technologies CZ, s.r.o.
Karla Engliše 3219/4
Praha, 150 00,
Czech Republic

✉ reseller@avg.com
☎ +420 549 524 011

Head Office:

AVG Technologies, N.V.
Gatwickstraat 9 -39
1043 GL Amsterdam
Netherlands



AVG Business Managed Workplace®